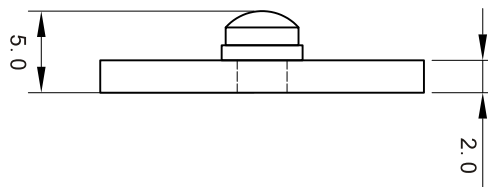
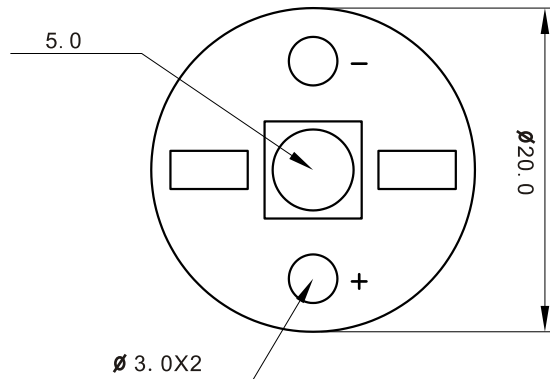


# R01W (1.0)

## Features

- \* 1w Power LED
- \* Size: dia. 20mm
- \* DC input
- \* Indoor / Outdoor use
- \* Saving energy
- \* Good illumination intensity
- \* Full range of colors
- \* Wide viewing angle
- \* Long life more than 60,000hrs
- \* Well heat sink
- \* RoHs Compliant

Part No.		R01W(1.0)
Lens		Water Clear
Chip	Ram Material	GaN
	Emitted colour	White



NOTES: 1. All dimensions are in millimeter (inches), tolerance is 0.25 unless otherwise noted.  
2. Specifications are subject to change without notice.

Absolute Maximum Rating: (TA=25°C)

Parameter	Symbol	Maximum Rating	Unit
Peak Forward Current	IFp	350	mA
Forward Current	IF	300	mA
Reverse Voltage	VR	5	V
Power Dissipation	PD	1	W
Operating Temperature	Topr	-40~+85	°C
Storage Temperature	Tstg	-40~+85	°C
Electrostatic Discharge	ESD	500	V

Lead soldering Temperature (4mm from body) : 260°C for seconds

Optical-Electrical Characteristic: (TA=25°C)

Parameter	Symbol	Condition	Min	Type	Max	Unit
Forward Current	VF	IF=300mA	3.0	-	3.6	V
Reverse Current	IR	VR=5V		-	5	uA
Chromaticity Coordinates	X	IF=300mA	0.28	0.30	0.33	nm
Chromaticity Coordinates	Y	IF=300mA	0.29	0.31	0.33	nm
CCT	Tc	IF=300mA	6000	-	8000	K
Flux	Φ	IF=300mA	60	-	64	Lm
Luminous Efficacy	lv	IF=300mA	60	-	63	Lm/W
Viewing Angle	2θ1/2	IF=300mA	-	120	-	Deg

Fig. 1

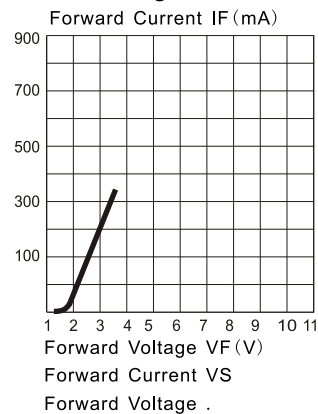


Fig. 2

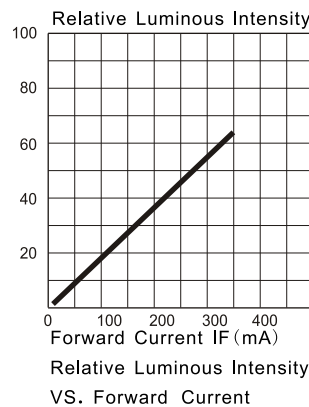


Fig. 3

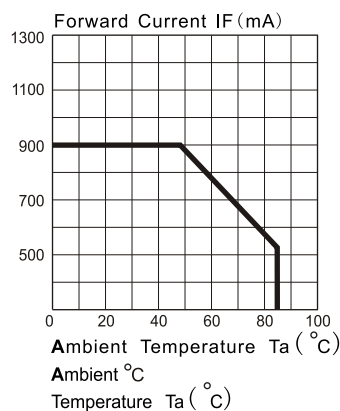
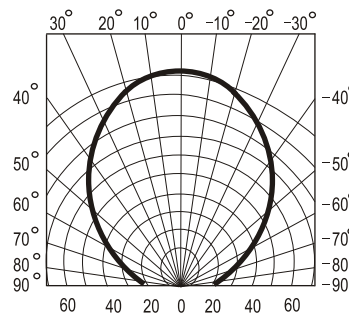


Fig. 4



NOTES: 1. All dimensions are in millimeter (inches), tolerance is 0.25 unless otherwise noted.  
2. Specifications are subject to change without notice.