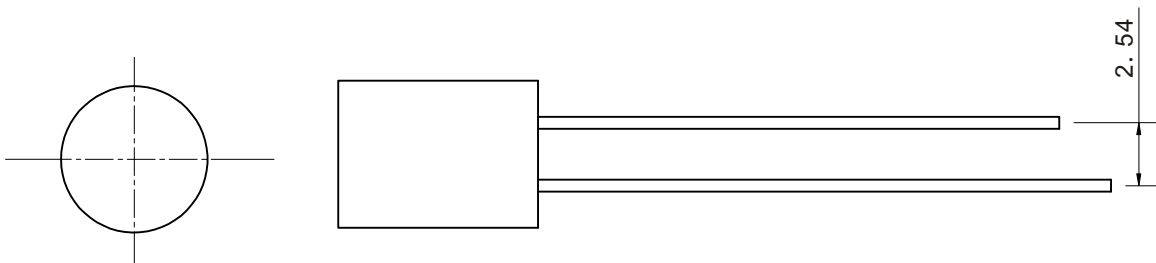
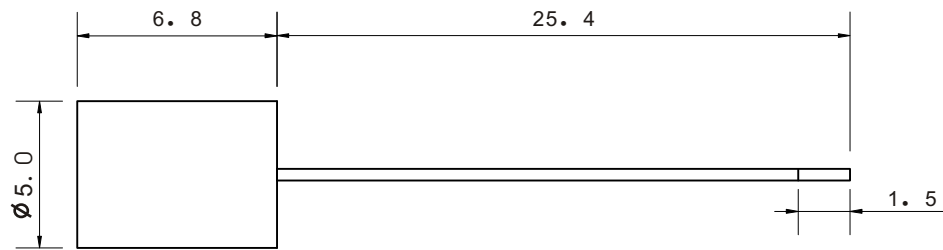


# L053SWD

## Features

- \* 5.0mm x 6.8mm round LED lamp
- \* Low power requirement
- \* I. C. Compatible
- \* Easy assembly
- \* RoHs compliant
- \* Wide viewing angle
- \* Bicolour version available

| Part No. | Chip         |                | Lens     |
|----------|--------------|----------------|----------|
|          | Ram Material | Emitted colour |          |
| L053SWD  | GAN          | White          | Diffused |



NOTES: 1. All dimensions are in millimeter (inches), tolerance is 0.25 unless otherwise noted.  
2. Specifications are subject to change without notice.

Absolute Maximum Rating: (TA=25°C)

| Parameter               | Symbol            | Maximum Rating | Unit |
|-------------------------|-------------------|----------------|------|
| Peak Forward Current    | IFp               | 70             | mA   |
| Forward Current         | IF                | 20             | mA   |
| Reverse Voltage         | VR                | 5              | V    |
| Power Dissipation       | PD                | 70             | mW   |
| Operating Temperature   | Topr              | -40~+85        | °C   |
| Storage Temperature     | Tstg              | -40~+85        | °C   |
| Electrostatic Discharge | ESD               | 500            | V    |
| Soldering Temperature   | 260°C for seconds |                |      |

Lead soldering Temperature (4mm from body) : 260°C for seconds

Optical-Electrical Characteristic: (TA=25°C)

| Parameter                | Symbol | Condition | Min | Type | Max  | Unit |
|--------------------------|--------|-----------|-----|------|------|------|
| Forward Current          | VF     | IF=20mA   | 3.0 | -    | 3.6  | V    |
| Reverse Current          | IR     | VR=5V     |     | -    | 5    | uA   |
| Chromaticity Coordinates | X      | IF=20mA   |     |      | 0.29 | nm   |
| Chromaticity Coordinates | Y      | IF=20mA   |     |      | 0.30 | nm   |
| Luminous Intensity       | Iv     | IF=20mA   | 150 | -    | 250  | mcd  |
| Viewing Angle            | 2θ1/2  | IF=20mA   | -   | 100  | -    | Deg  |

Fig. 1

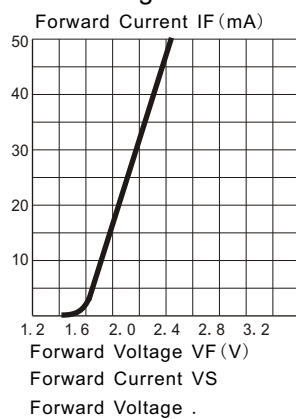


Fig. 2

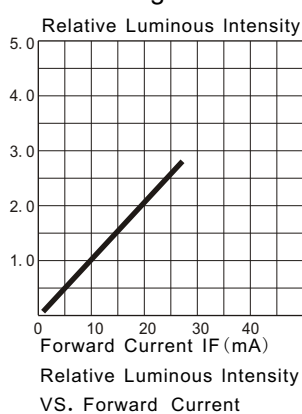


Fig. 3

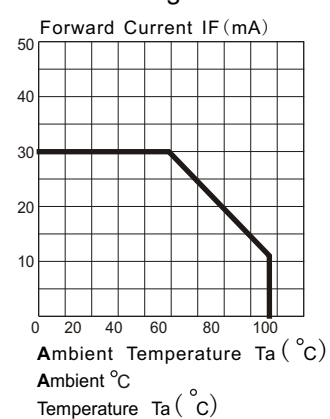


Fig. 4

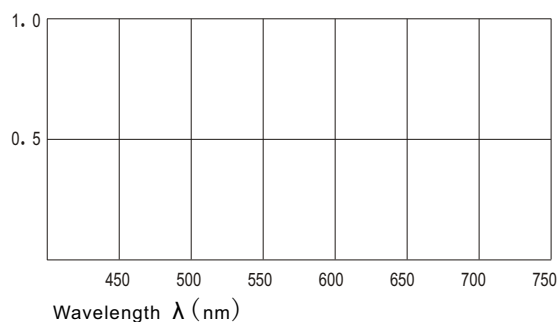


Fig. 5

