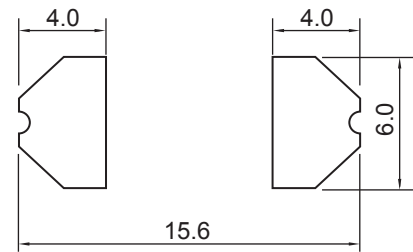
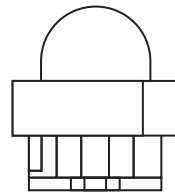
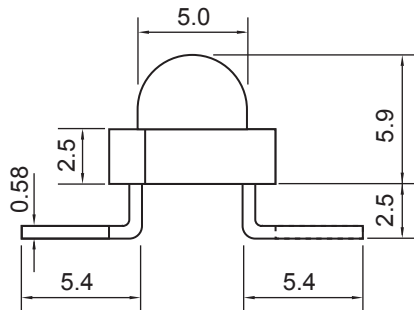
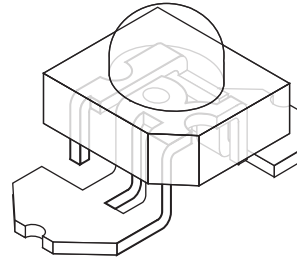
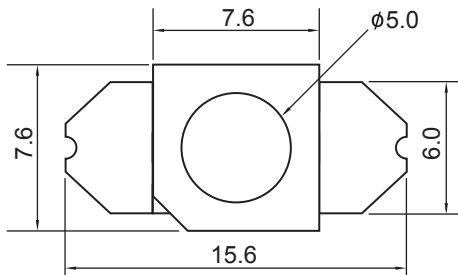


FLS77RC



RECOMMEND PAD LAYOUT

Absolute maximum ratings(Ta=25°C)

Parameter	Symbol	Value	Unit
Forward current	I _f	30	mA
Reverse voltage	V _r	5	V
Power dissipation	P _d	80	mW
Operating temperature range	Top	- 25 ~ + 80	°C
Storage temperature range	T _{stg}	- 30 ~ + 85	°C
Peak pulsing current *1	I _{fp}	100	mA

Item	Materials
Resin (mold)	Epoxy
Bonding wire	Ø25 um Au
Lens color	Water Clear
Printed circuit board	BT(White)
Dice	
Emitted color	Red- Orange

Electro -Optical characteristics(Ta=25°C)

Parameter	Test Condition	Symbol	Value			Unit
			Min	Typ	Max	
Wavelength at peak emission	I _f =20mA	λ _p	-	621	-	nm
Spectral half bandwidth	I _f =20mA	Δλ	-		-	nm
Dominant wavelength	I _f =20mA	λ _D				nm
Forward voltage	I _f =20mA	V _f	1.8		2.3	V
Luminous intensity	I _f =20mA	I _v		12000	-	mcd
Viewing angle	I _f =20mA	2Θ1/2	-	30	-	Deg
Reverse current	V _r =5V	I _r	-	-	10	uA

*1 Condition for IFP .Is pulses of 1/10 duty and 0.1 msec width.